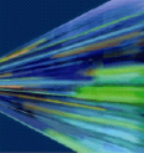


Affordable Smart Metering

SECOR



Smart Metering at an Affordable Price

Overview

As the UK water industry moves towards 100% metering, methods to reduce reading costs become increasingly important. This is especially an issue given the rising issue of affordability.

Companies are under mounting pressure to provide more frequent consumption information and more flexible tariffs to help customers manage both usage and costs. Given this the standard meter reader approach is far from ideal. To date however remote reading technologies have been cost prohibitive.

Through a partnership with Eco Meters, SECOR is now able to provide remote meter reading at an affordable price.

Benefits

- Utilising GSM avoids network investment
- Easily extendable to multi-service
- Under half the cost of rival solutions
- Web based consumption display
- Compatible with all pulse meters

SECOR Services

- GPRS Smart Meter Adaptor (battery powered)
- GPRS Smart Meter Adaptor (mains powered)
- Zigbee radio for additional remote meters/devices
- Signal boosters

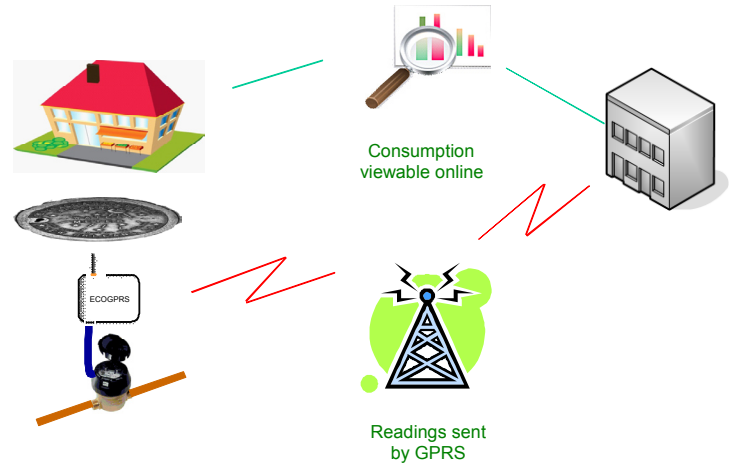
Description

Following government pressure, the UK water industry is now moving towards 100% metering. As meter penetration increases, reading costs also increase at a time when the issue of affordability is becoming more prominent across the industry.

As water costs increase, customers will seek and demand methods by which consumption can be monitored more frequently and hence managed. Water efficiency considerations and the phased introduction of competition will also see a demand for more flexible tariffs which in turn will require a greater frequency of readings to support them.

Increasing the reading frequency would prove expensive via manual methods. To date, however, remote reading technologies have been cost prohibitive.

In partnership with ECO Meters SECOR is now able to provide you with a cost-effective smart metering solution.



Readings sent via mobile

The basic ECO Meter consists of a battery powered GPRS hub. This is installed within the meter pit and periodically transmits data back to base, via GPRS using a GSM mobile.

An in-house hub is also available (pictured below) to support in-house meters, multi-meter configurations and multi-service configurations.

SECOR is currently in discussions with four water utilities regarding trials, with the first due to commence within weeks.



Illustrating in-house hub

Quality people, specialist knowledge and pragmatic solutions

